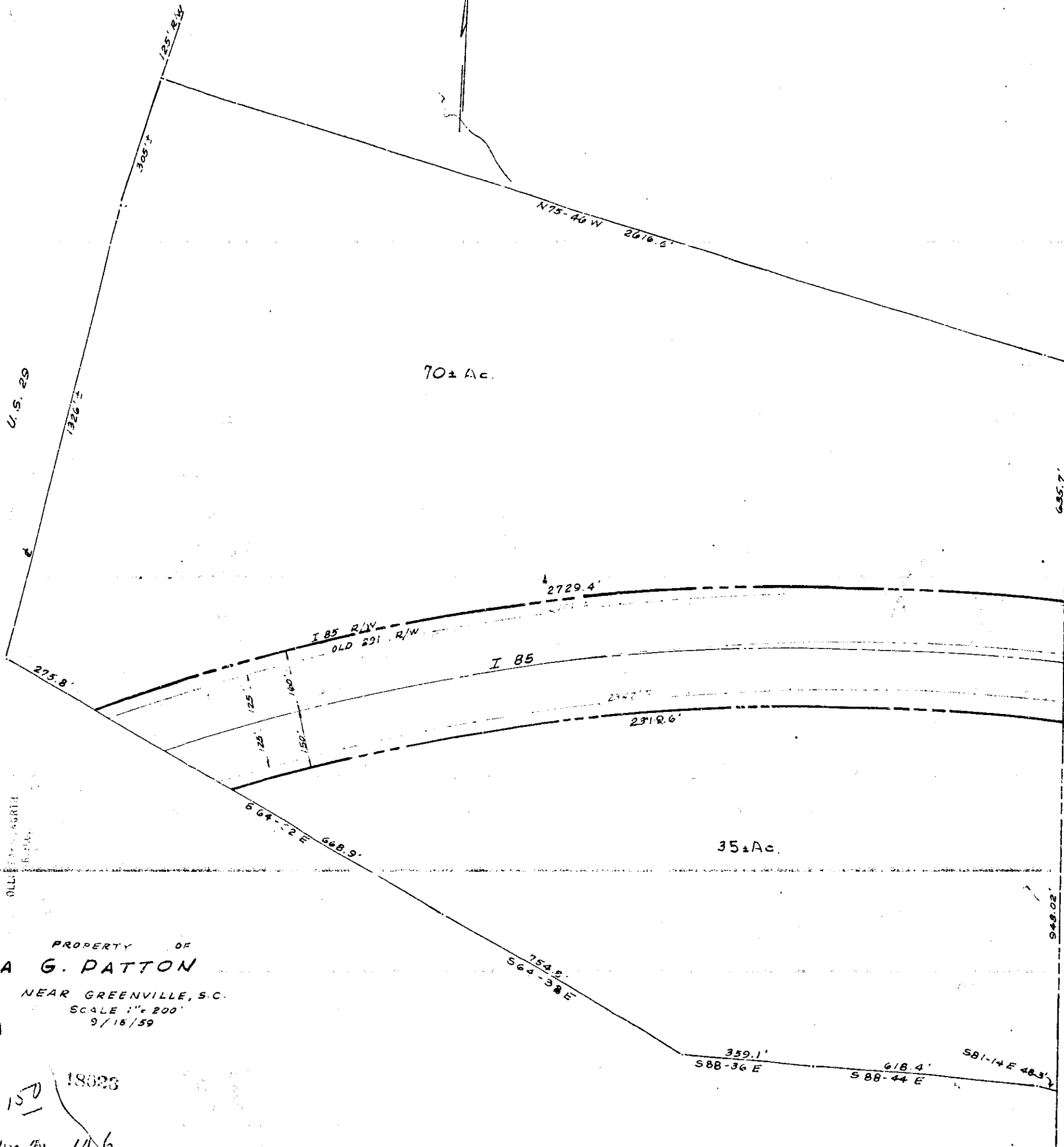


Plat Book-MM-Page 106



FILED
 GREENVILLE, S.C.
 DEC 21 3 33 11 1959
 OLLI [unclear]

PROPERTY OF
LULA G. PATTON
 NEAR GREENVILLE, S.C.
 SCALE 1" = 200'
 9/18/59

DEC 21 1959

150
 18023
 MM-106

12023
 W.M. - 106
 [unclear]
 Register [unclear]